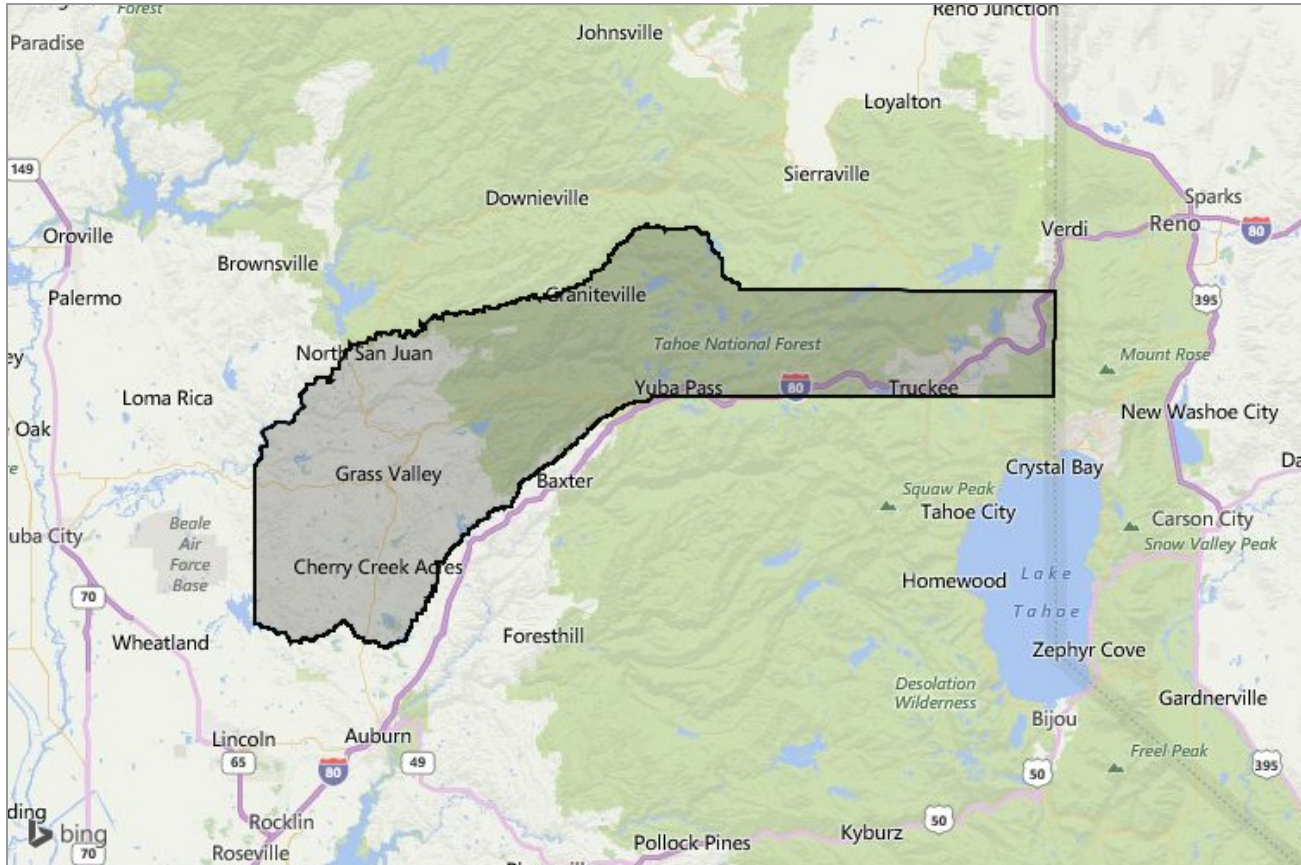


MARKET DATA REPORT

Nevada County Association of REALTORS®



Provided for the month of
February 2016

(530) 272-2627

<http://www.nevadacountyar.com/>

336 Crown Point Circle
Grass Valley, CA 95945

Listings Trends

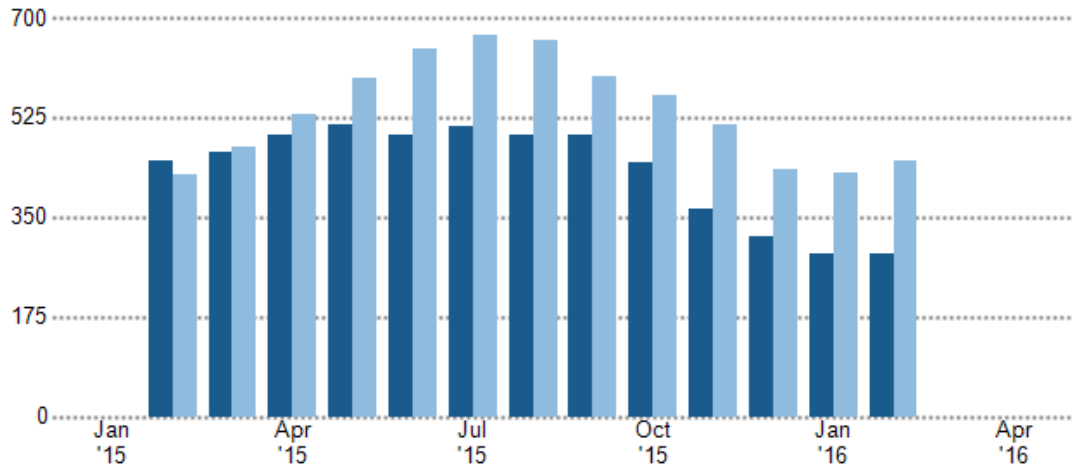
The key metrics for residential inventory (single-family homes, condominiums and townhomes) track the total number and value of active listings, pricing and market pace. Inventory trends are subject to seasonal effects and are driven by employment, household formation and affordability. The average time it takes to sell a property and the rate of inventory absorption are constrained by inventory or demand, and pricing reflects the impact of these constraints. The area covered by these graphs is the footprint of an Association, MLS or broker. Data source(s): MLS listings data

Active Listing Count

The number of single-family, condominium and townhome listings at the end of each month.

■ Past 12 Months
■ One Year Earlier

This Month	287
Last Month	287
Same Month a Year Ago	449

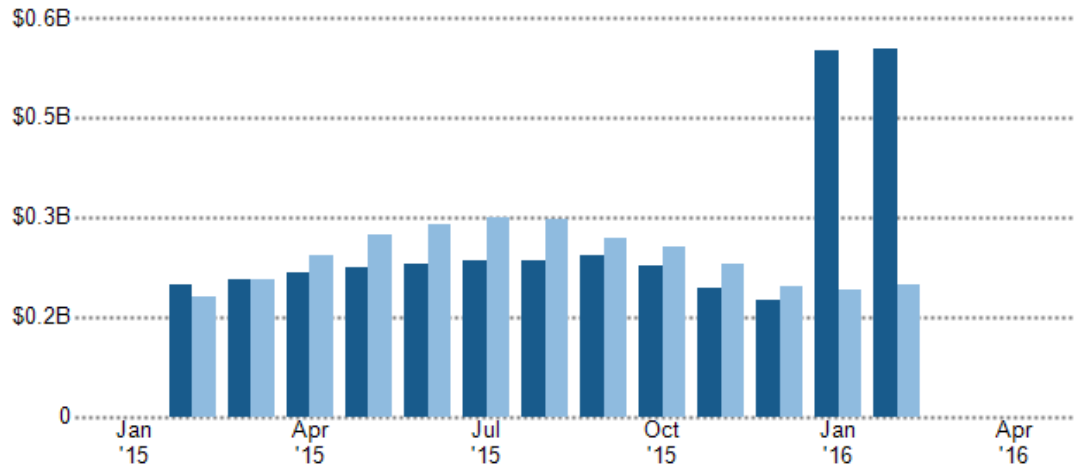


Active Listing Volume

The sum of the listing price of single-family, condominium and townhome listings at the end of each month.

■ Past 12 Months
■ One Year Earlier

This Month	\$552.9M
Last Month	\$549.5M
Same Month a Year Ago	\$197.4M

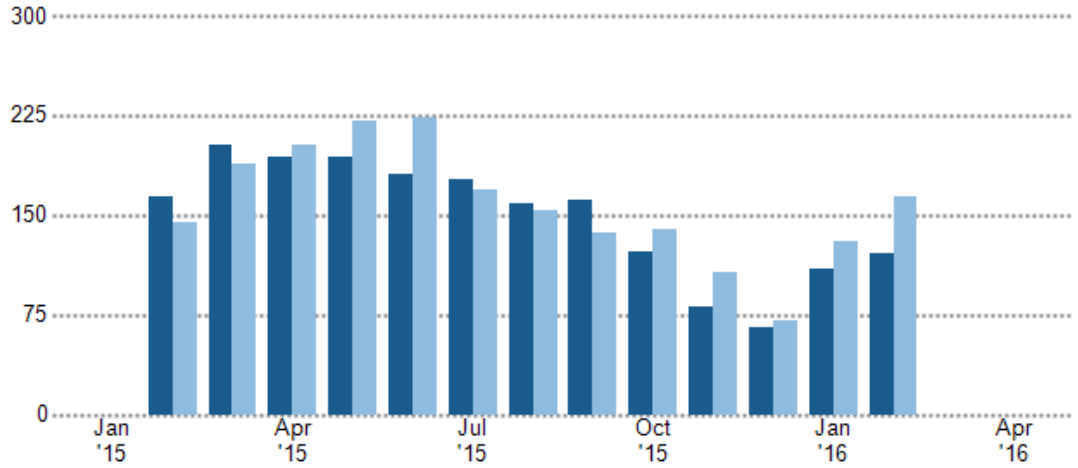


New Listing Count

The number of new single-family, condominium and townhome listings that were added each month.

■ Past 12 Months
■ One Year Earlier

This Month: 121
Same Month a Year Ago: 164

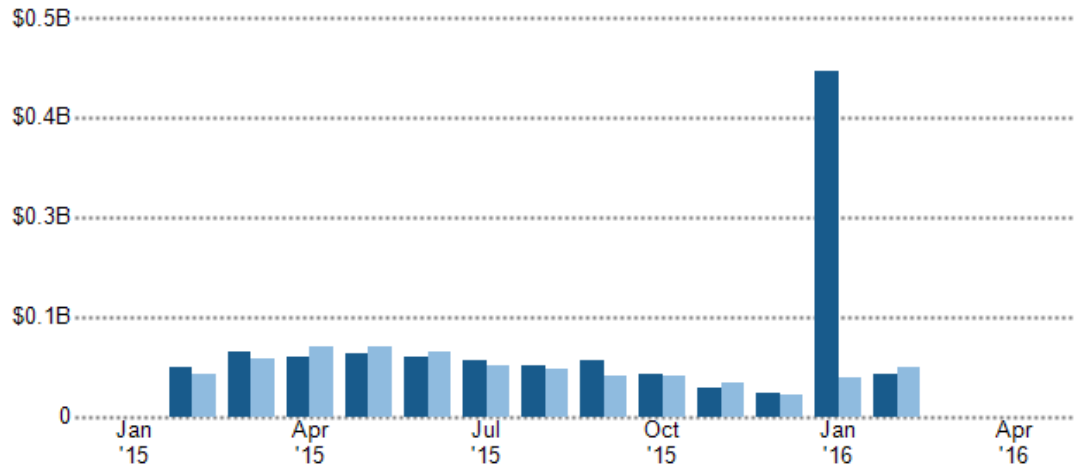


New Listing Volume

The sum of the listing price of new single-family, condominium and townhome listings that were added each month.

■ Past 12 Months
■ One Year Earlier

This Month: \$53.7M
Same Month a Year Ago: \$61.3M

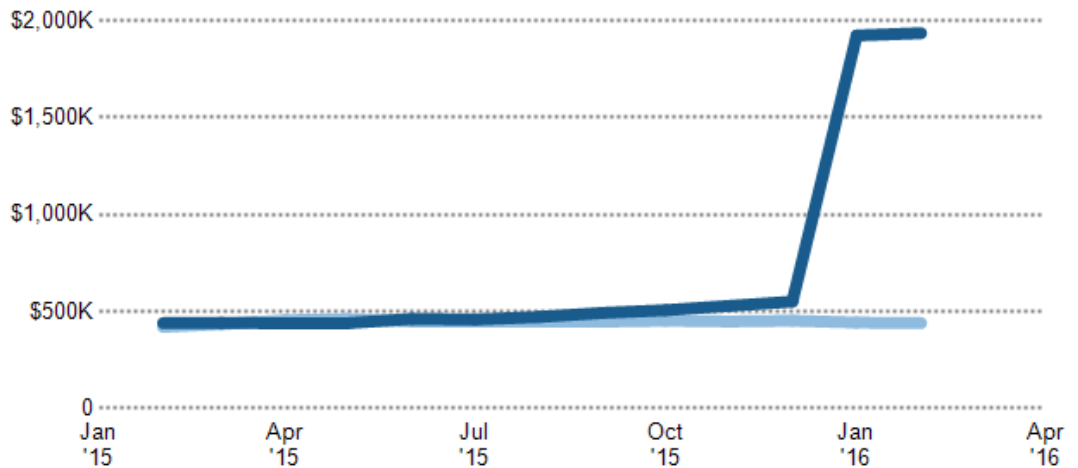


Average Listing Price

The average price for all listed residential properties that were active at the end of each monthly period.

■ Past 12 Months
■ One Year Earlier

This Month: \$1,933K
Last Month: \$1,921K
Same Month a Year Ago: \$441K

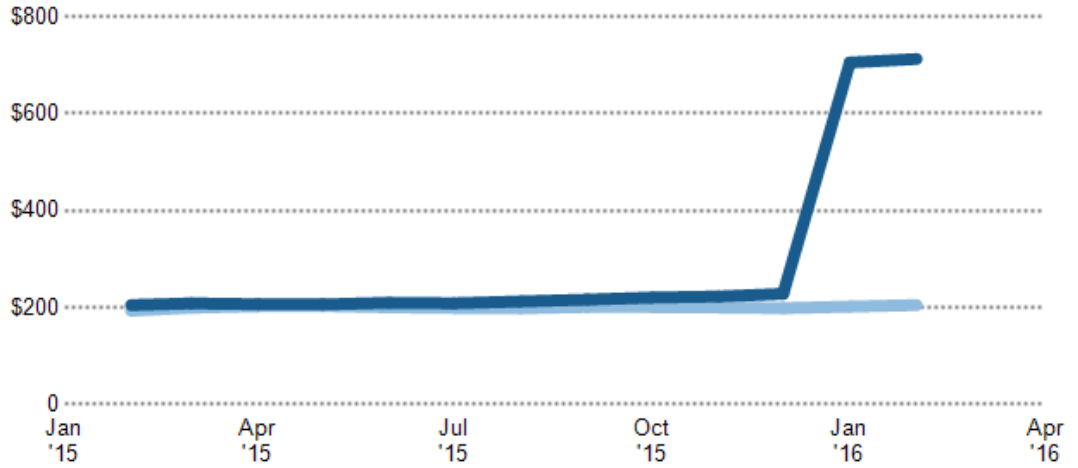


Average Listing Price per Square Foot

The average of listing prices divided into the living area of homes on the market during each monthly period.

■ Past 12 Months
■ One Year Earlier

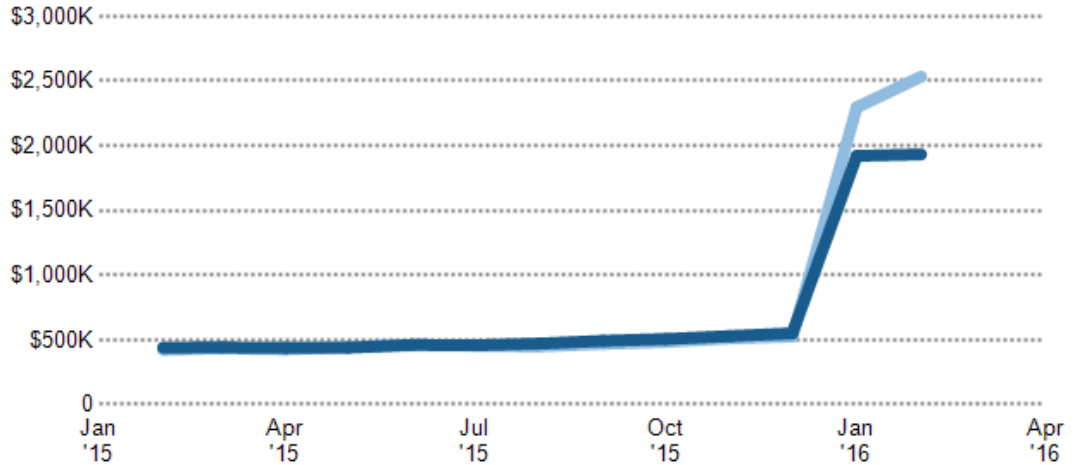
This Month	\$712
Last Month	\$705
Same Month a Year Ago	\$205



Average Listing Price vs. Estimated Value

The ratio of average listing price to the average AVM or RVM® automated valuation estimate for the same properties. Realtors Valuation Model® is a computer model of residential property values produced by RPR.

■ List Price
■ RVM

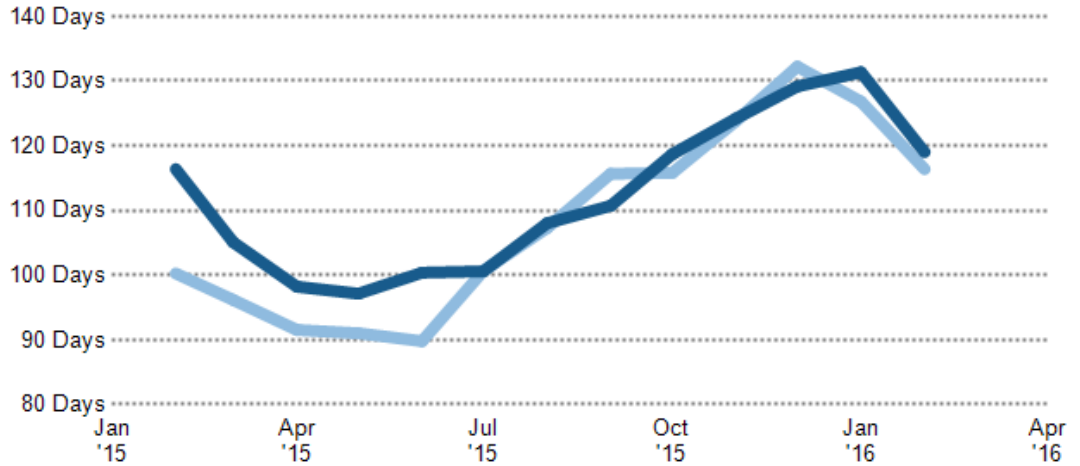


Average Days in RPR

The average number of days between when residential properties are first displayed as active listings on RPR and when accepted offers have been noted in RPR's system.

■ Past 12 Months
■ One Year Earlier

This Month	119 Days
Last Month	131 Days
Same Month a Year Ago	116 Days



Average Days in RPR By County

A geographical breakdown of the average days in RPR. Up to 10 markets with the lowest average days in RPR are displayed.

■ County

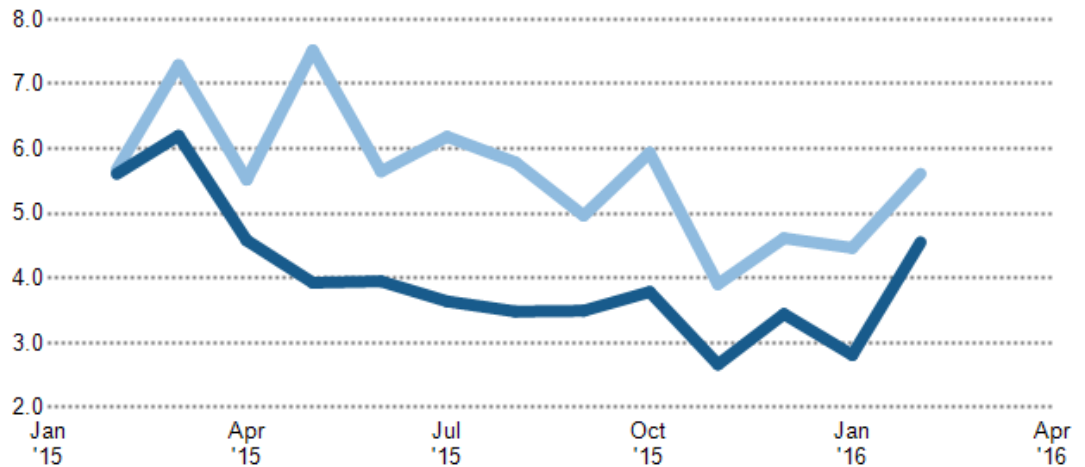


Months of Inventory

Compares the number of months it would take to exhaust active listings at the current sales rate.

■ Past 12 Months
■ One Year Earlier

This Month	5
Last Month	3
Same Month a Year Ago	6

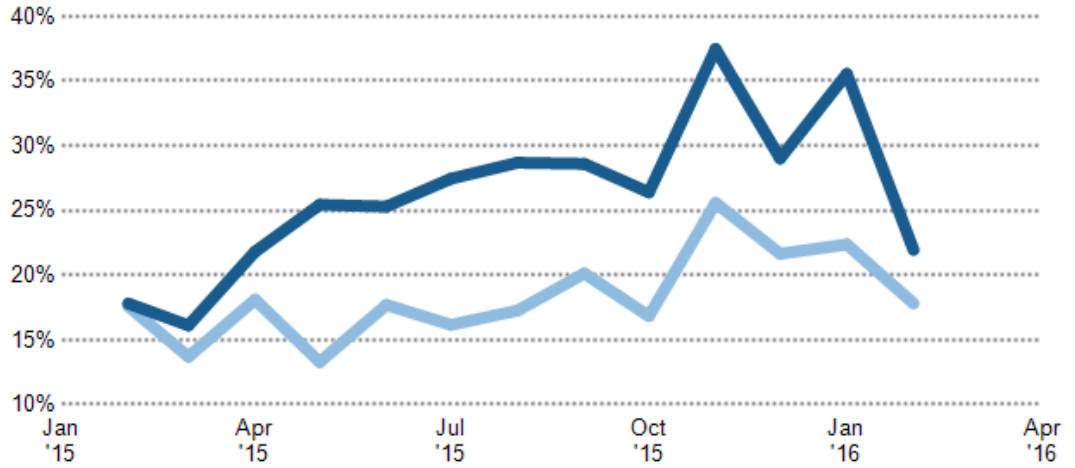


Absorption Rate

A measure of market pace, which compares that rate at which new inventory is coming onto the market to the average time it takes to sell.

■ Past 12 Months
■ One Year Earlier

This Month	22%
Last Month	36%
Same Month a Year Ago	18%



Absorption Rate By County

A geographical breakdown of absorption rate. Up to 10 markets with the highest absorption rates are displayed.

■ County



Sales Trends

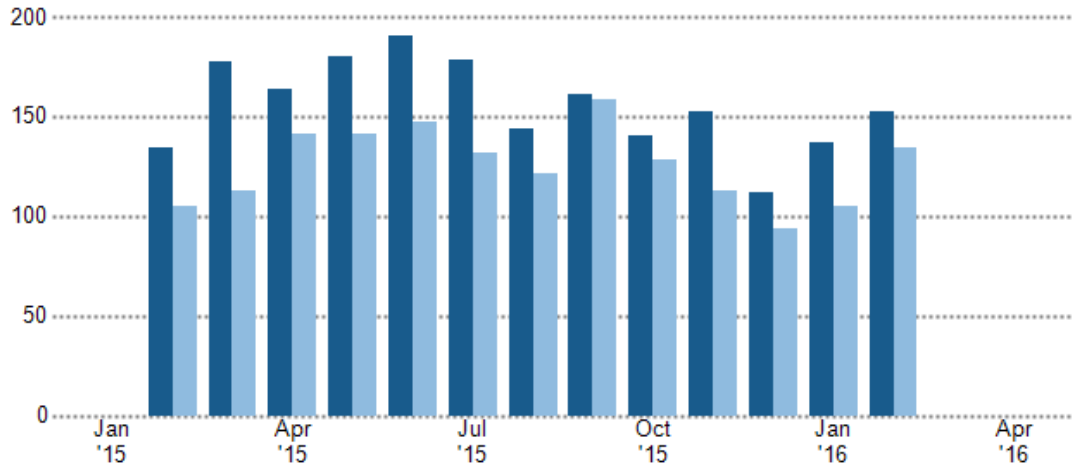
The metrics for completed sales reflect the demand side of the housing market—how many residential properties actually were sold and for how much. Large differences between supply (active inventory) and demand can indicate an imbalance in the market, which tends to even out over time as pricing shifts to correct for an over- or undersupply of inventory. The area covered by these graphs is the footprint of an Association, MLS or broker. Data source(s): MLS listings data

Pending Sales Count

The number of single-family, condominium and townhome properties with accepted offers at the end of the month in this market.

■ Past 12 Months
■ One Year Earlier

This Month	152
Last Month	137
Same Month a Year Ago	134

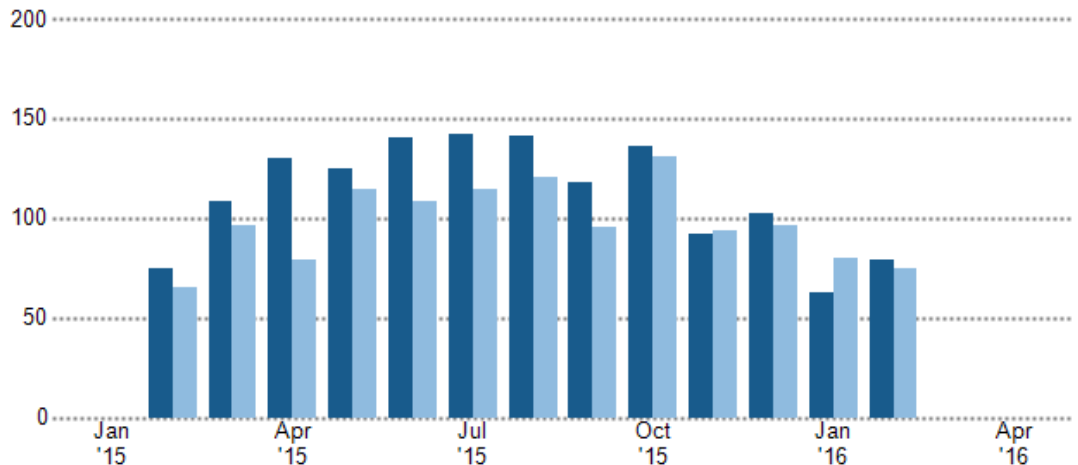


Sales Count

The total number of single-family, condominium and townhome units that closed sale during each monthly period.

■ Past 12 Months
■ One Year Earlier

This Month	79
Last Month	63
Same Month a Year Ago	75



Sales Count by County

A geographical breakdown of sales count. Up to 10 markets with the highest sales count are displayed.

■ County

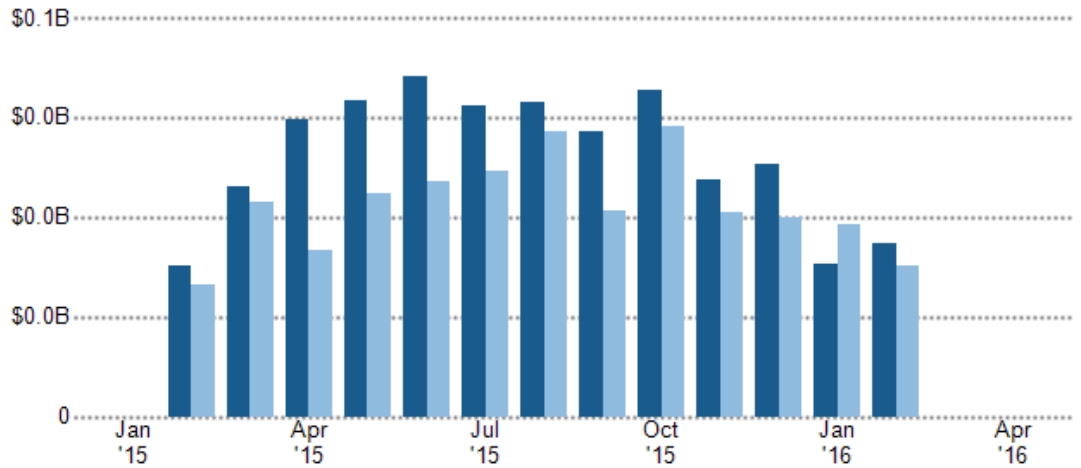


Sales Volume

The sum of prices for all residential properties that closed during each monthly period, excluding any concessions.

■ Past 12 Months
■ One Year Earlier

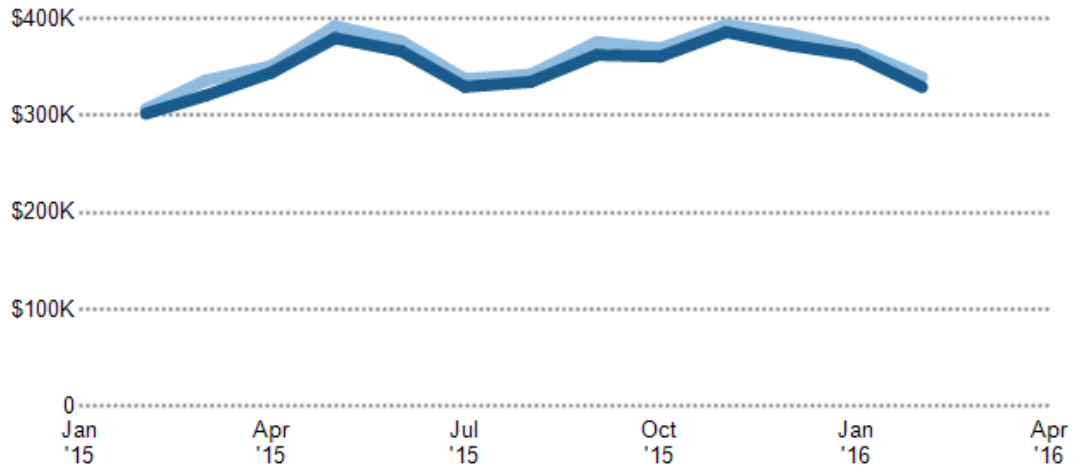
This Month	\$26.0M
Last Month	\$22.8M
Same Month a Year Ago	\$22.6M



Average Listing Price vs. Average Sales Price

The ratio of average listing prices for actively listed properties at the end of each month to average sales prices each month, reflecting whether the market is a "buyers market," "sellers market" or a balanced market.

■ Sales Price
■ List Price

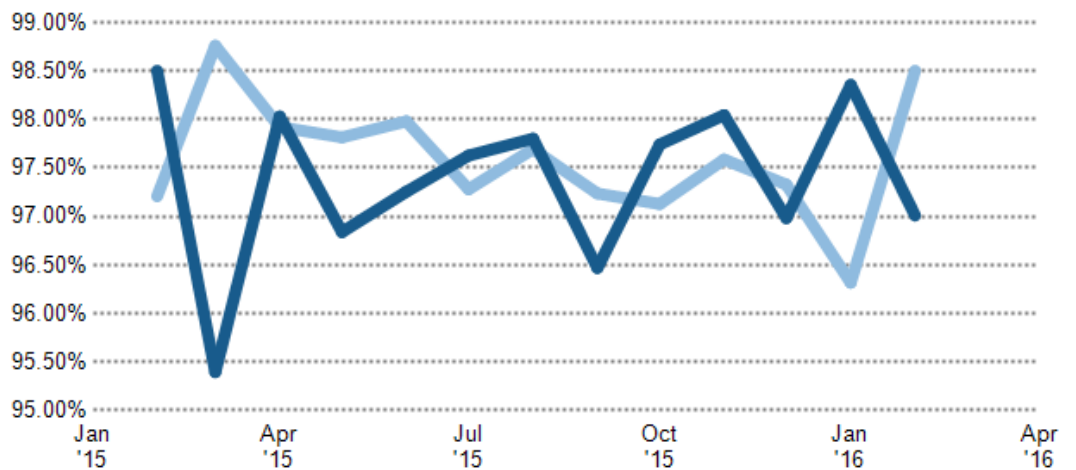


Percentage of Listing Price

The average percentage of listing price for which homes sold for each monthly period.

■ Past 12 Months
■ One Year Earlier

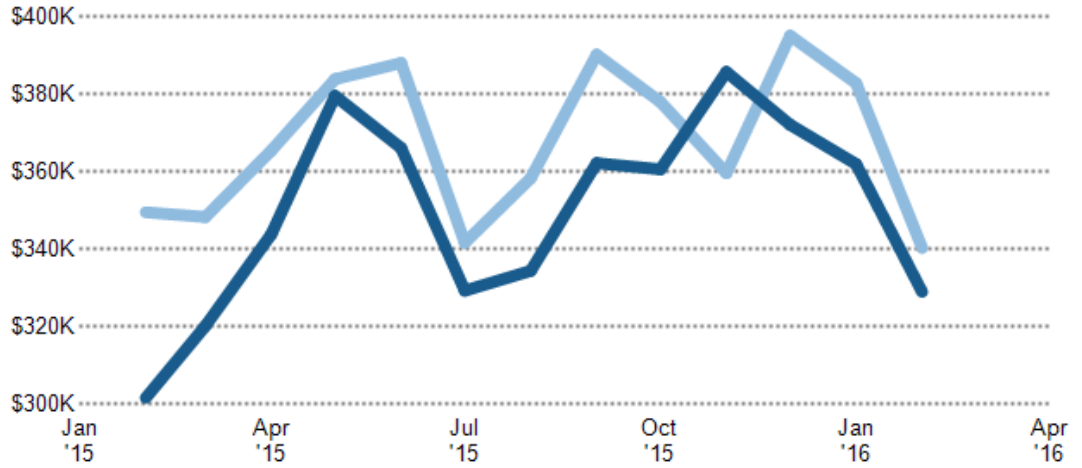
This Month	97.01%
Last Month	98.35%
Same Month a Year Ago	98.50%



Average Sales Price vs. Estimated Value

The ratio of average sales price (excluding any concessions) to the average AVM or RVM® automated valuation estimate for the same properties. Realtors Valuation Model® is a computer model of residential property values produced by RPR.

■ Sales Price
■ RVM



Disclaimer:

Report prepared 3/7/2016. Listing data supplied by Nevada County Association of REALTORS® MLS, subject to broker exclusion, and may not include all listings available from the MLS. Listing data covers the following county or counties. California: Nevada. All information is not guaranteed and should be independently verified.